



A·C·I
Pharma

Compresores libres de aceite

- ▶ De tornillo seco
- ▶ Scroll
- ▶ De pistón



HERTZ Eagle series

HERTZ HS Scroll

SCHULZ Scroll

hertz
KOMPRESSOREN



HS SERIES
SCROLL COMPRESSORS

GENERAL FEATURES



ELECTRONIC CONTROL

HERTZ Scroll compressors are equipped with easy-to-use, robust and long-lasting microprocessor control devices with communication features according with the product line to ensure smooth operation and uninterrupted production.



Efficient Control of Multiple Oil-Free Scroll Compressors

DX320 controllers can control up to 8 units of oil-free scroll compressors efficiently. Each compressor and step can be adjusted differently.

Intelligence Balance Control by Rotation

For overall working balance and equal ageing, compressors are operated according to the working hours and on/off priorities.

Ease of Service

Designed by consideration of convenient spare parts replacement and maintenance periods for ease of service.

RS485 Communication (MODBUS)

Versatile and able to connect with the upper systems perfectly. Communication via RS485 (MODBUS) offers and provides many features to the users such as remote control, remote display, data monitoring.



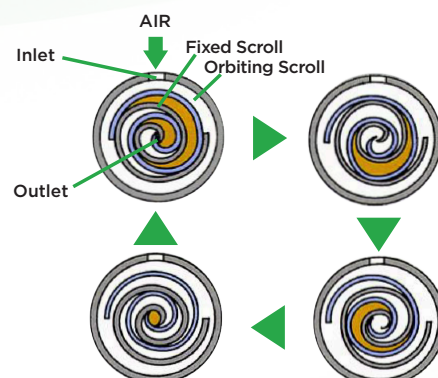
MECHANISM AND STRUCTURE



Scroll Type Compression Principle

Orbital scroll member and fixed scroll member are matched to create compression chambers.

The continuous movement of the orbital spiral compresses air from the atmosphere and produces oil-free, contaminant-free compressed air.





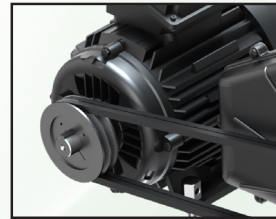
HS Series Scroll Compressors

Hertz HS series oil-free scroll compressors offers 100% oil-free compressed air for applications that require clean & oil-free air. HS Series oil-free scroll compressors offers the best solution for clean compressed air for production industries such as electronics, food & beverage, pharmaceutical production as well as applications that clean oil-free air is essential; medical, dental, railway transportation & medical applications. Completely oil-free compressed air according to ISO 8573-1 Class- ZERO.



MAIN MOTOR AND DRIVE SYSTEM

- Premium efficiency IE3/IP 55/F Class motors.
- Belt-pulley drive system.
- Easy belt tensioning system.



COMPRESSOR BLOCK

- High efficiency scroll design.
- Integrated cooling fan on scroll element provides efficient cooling.
- Oil-less design avoids frequent oiling.

FEATURES

- Compact in size
- Low vibration
- Extremely low noise level
- Sound insulated canopy
- Built in aftercooler(s), water separator and stainless piping
- Robust and durable single unit or stacked design
- CLASS-0 ISO 8573-1



TECHNICAL DATA

| Model | Pressure | | Capacity | | Motor Power kW/HP | Connection Size | Dimensions (mm) | | | Weight kg |
|----------|----------|-----|---------------------|-----|-------------------|-----------------|-----------------|-------|--------|-----------|
| | bar | psi | m ³ /min | cfm | | | Length | Width | Height | |
| HS1.5-S | 8 | 115 | 0,16 | 6 | 1,5/2 | G 1/2" | 750 | 710 | 900 | 195 |
| | - | - | - | - | | | | | | |
| HS2.2-S | 8 | 115 | 0,24 | 9 | 2,2/3 | G 1/2" | 750 | 710 | 900 | 200 |
| | 10 | 145 | 0,20 | 7 | | | | | | |
| HS3.7-S | 8 | 116 | 0,40 | 14 | 3,7/5 | G 1/2" | 750 | 710 | 900 | 220 |
| | 10 | 145 | 0,34 | 12 | | | | | | |
| HS5.5-S | 8 | 115 | 0,60 | 21 | 5,5/7,5 | G 1/2" | 750 | 710 | 900 | 230 |
| | 10 | 145 | 0,47 | 17 | | | | | | |
| HS7.5-S | 8 | 115 | 0,85 | 30 | 7,5/10 | G 1/2" | 750 | 800 | 900 | 235 |
| | 10 | 145 | 0,68 | 24 | | | | | | |
| HS7,5-D | 8 | 115 | 0,80 | 29 | 7,5/10 | G 3/4" | 1500 | 800 | 1050 | 405 |
| | 10 | 145 | 0,68 | 24 | | | | | | |
| HS11-D | 8 | 115 | 1,20 | 43 | 11/15 | G 3/4" | 1500 | 800 | 1050 | 425 |
| | 10 | 145 | 0,94 | 34 | | | | | | |
| HS15-D | 8 | 115 | 1,70 | 61 | 15/20 | G 3/4" | 1500 | 800 | 1050 | 440 |
| | 10 | 145 | 1,36 | 49 | | | | | | |
| HS11-T | 8 | 115 | 1,20 | 43 | 11/15 | G 1" | 1500 | 800 | 1840 | 590 |
| | 10 | 145 | 1,02 | 36 | | | | | | |
| HS16,5-T | 8 | 115 | 1,80 | 64 | 16,5/22 | G 1" | 1500 | 800 | 1840 | 665 |
| | 10 | 145 | 1,41 | 50 | | | | | | |
| HS22.5-T | 8 | 115 | 2,55 | 91 | 22,5/30 | G 1" | 1500 | 800 | 1840 | 675 |
| | 10 | 145 | 2,04 | 73 | | | | | | |
| HS15-Q | 8 | 115 | 1,60 | 57 | 15/20 | G 1" | 1500 | 800 | 1840 | 695 |
| | 10 | 145 | 1,36 | 49 | | | | | | |
| HS22-Q | 8 | 115 | 2,50 | 88 | 22/30 | G 1" | 1500 | 800 | 1840 | 795 |
| | 10 | 145 | 1,88 | 67 | | | | | | |
| HS30-Q | 8 | 115 | 3,40 | 121 | 30/40 | G 1" | 1500 | 800 | 1840 | 805 |
| | 10 | 145 | 2,72 | 97 | | | | | | |

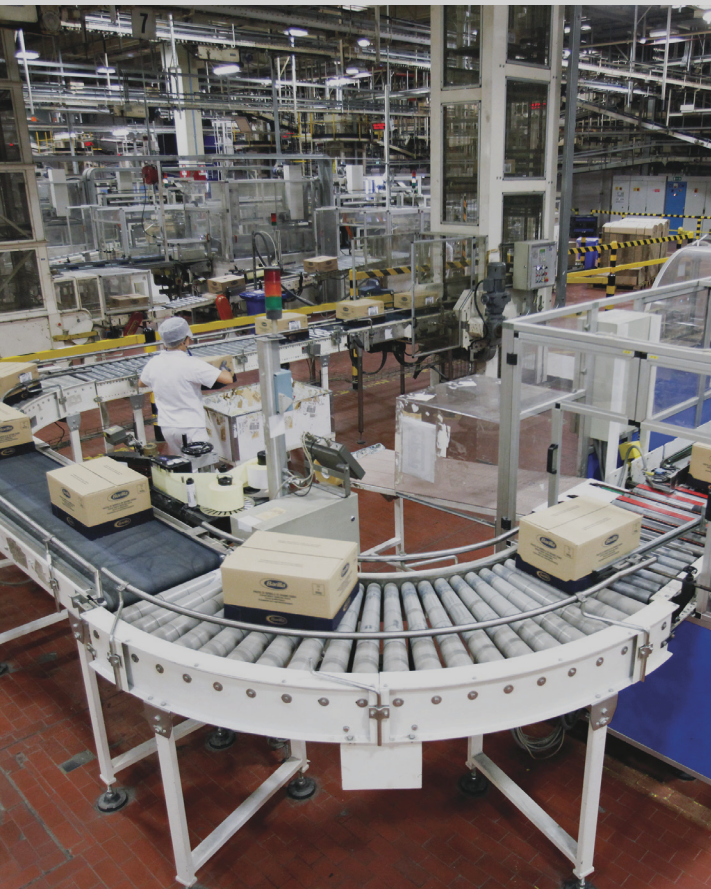
- Unit performances measured in reference conditions which are 1 bar absolute air Pressure, %0 relative humidity, 20°C inlet air temperature, 71°C thermostatic valve set temperature and use of Smartoil.
- HERTZ KOMPRESSOREN reserves its rights to make changes in its products and specifications without prior notice.

hertz[®]
KOMPRESSOREN

HERTZ KOMPRESSOREN GLOBAL
export@hertz-kompressoren.com

HERTZ KOMPRESSOREN GmbH
Kronacher Str. 60, 96052 Bamberg
T. +49 951 96 43 13 88
F. +49 951 96 43 13 50
info@hertz-kompressoren.de

HERTZ KOMPRESSOREN USA Inc.
3320 Service St. Charlotte, NC 28206 USA
Phone : +1-704-579-5900
Fax : +1-704-579-5997
info@hertz-kompressoren.us



EAGLE SERIES

OIL FREE ROTARY SCREW COMPRESSORS



GENERAL FEATURES



% 100 OIL FREE

HERTZ Eagle Series 2 Stage Dry Screw oil-free compressors maintain 100 % oil-free air for industries which require clean and oil-free compressed air.



TECHNOLOGY

Special coated rotors “ No Teflon wear”, reliable airend design with timing gears, special bearings and seals. “No maintenance for diaphragm and balancing pistons”, Efficient special air cooling design, Simple and easy to maintenance machine lay-out, Latest technology PLC controllers with remote communication and start/stop capability.



PLC CONTROLLER

- Multi-operation function up to 5 compressors without requiring an external main controller
- Thanks to the automatic motor bearing lubrication system, the motor is never lubricated too much, too little or too late.
- Weekly scheduler with the ability to start and stop the machine at 3 different time periods, which can be set individually for each day of the week.
- Ability to do both pressure and temperature PID at the same time thanks to the Dual PID feature.
- With the pressure PID, it provides energy efficiency by keeping the pressure constant at the desired value.
- All inverter and compressor control data are managed from a single point in models with an inverter.
- Internal ModBus communication



STANDARD FEATURES

- Sound insulated canopy
- Electrostatic powder coated components for high corrosion resistance
- Electric motor protection for preventing over loading
- F Class 50 Hz IE4 motors
- Two stage air-end
- Air or water cooled system alternatives
- Pre-cooling system for Air cooled machines, entirely stainless steel exchanger parts for water cooled machines.
- Variable speed drive or fixed speed drive alternatives

OTHER OPTIONS

- Automatic greasing system
- Heat Recovery System



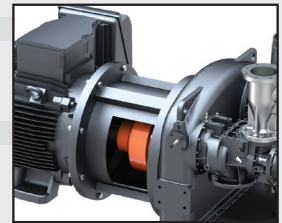
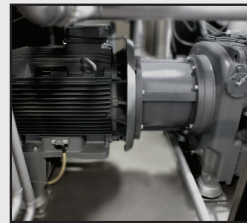


EAGLE SERIES Oil Free Rotary Screw Compressors

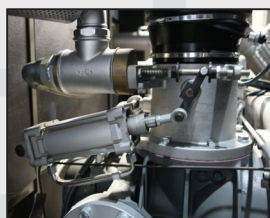
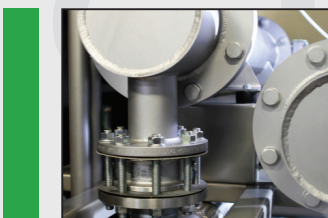


Completely oil-free compressed air according to ISO 8573-1 Class- ZERO. Compressors tested and approved by TUV Rheinland Germany.

- High performance compliant with ISO 1217, Annex C/E
- Direct-Drive driving system with efficient IE4 class electric motor and flexible coupling
- Proven reliability



- Easy to service, durable, powerful hydraulic actuated suction loader
- Water separator for both of stages
- Minimized level of maintenance and running costs by trouble free production cycle



AIR END

■ Totally oil free air

Very reliable and field proved sealing arrangement ensures separation oil free area from the oil needed for lubrication of gears and bearings

■ Robust design reliable in operation under the most difficult condition

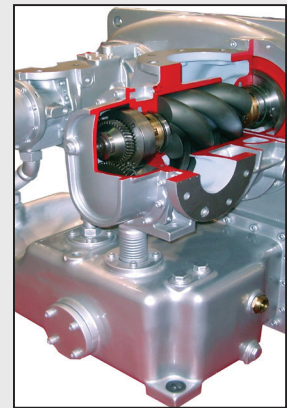
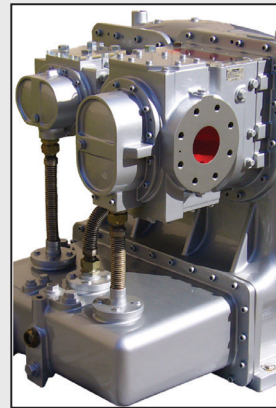
Working in dusty, wet, cold and hot environment possible

■ Bearing arrangement guarantees long life without vibrations

The radial forces are compensated by cylindrical roller bearings, the axial forces are compensated by four-point bearings arranged on the discharge side.

■ High engineered gear driven Design

The gear box is equipped with helical bullgear running in an anti-friction bearing. Rotors are dynamically balanced ensuring excellent running properties of the screw air ends



■ Special coating for long term high efficiency

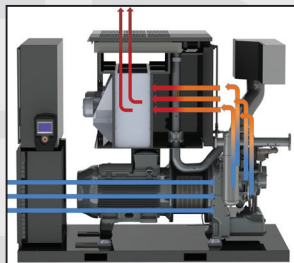
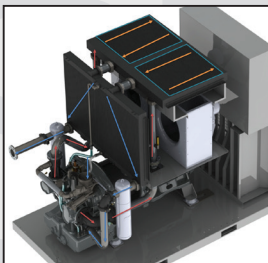
Excellent Coating of rotors and inner part of housing allows reduction of clearances to levels minimum and increases efficiency.

■ Stainless steel rotors in the HP-stage

Elimination damage through corrosion and rusting after longer shutdown times.

COOLING

- Two stage cooling system with pre-cooler
- Stainless steel fin & tube pre-cooler
- Aluminum bar & plate after cooler
- Efficient design concept
- Easy to maintenance & cleaning
- Mahable panel filter



TECHNICAL DATA

| Model | Pressure | | Capacity | | Motor Power kW/HP | Connection Size | Dimensions (mm) Air Cooled / Water cooled | | | Weight kg | Noise dB(A) |
|------------|----------|-----|---------------------|--------|----------------------|-----------------|--|-------|------------|--------------|----------------|
| | bar | psi | m ³ /min | cfm | | | Length | Width | Height | | |
| EAGLE 37 | 7 | 100 | 6,00 | 211,9 | 37/50 | G 2" | 2450 | 1600 | 2160 | 2270/2285 | 76 |
| | 8,5 | 125 | 5,30 | 187,2 | | | | | | | |
| | 10 | 145 | 4,80 | 169,5 | | | | | | | |
| EAGLE 45 | 7 | 100 | 7,50 | 264,9 | 45/60 | G 2" | 2450 | 1600 | 2160 | 2450/2460 | 76 |
| | 8,5 | 125 | 6,50 | 229,6 | | | | | | | |
| | 10 | 145 | 5,90 | 208,4 | | | | | | | |
| EAGLE 55 | 7 | 100 | 9,40 | 332,0 | 55/75 | G 2" | 2450 | 1600 | 2160 | 2600/2610 | 77 |
| | 8,5 | 125 | 8,60 | 303,8 | | | | | | | |
| | 10 | 145 | 7,50 | 264,9 | | | | | | | |
| EAGLE 75 | 7 | 100 | 12,70 | 448,6 | 75/100 | G 2" | 2450 | 1600 | 2160 | 2860/2850 | 77 |
| | 8,5 | 125 | 11,80 | 416,8 | | | | | | | |
| | 10 | 145 | 10,20 | 360,3 | | | | | | | |
| EAGLE 90 | 8,5 | 125 | 12,70 | 448,6 | 90/125 | G 2" | 2450 | 1600 | 2160 | 2950/2940 | 78 |
| | 10 | 145 | 12,60 | 445,0 | | | | | | | |
| EAGLE 90 B | 7 | 100 | 15,54 | 548,9 | 90/125 | DN80 | 3085 | 1825 | 2450/2200 | 3650/3900 | 80 |
| | 8,5 | 125 | 13,20 | 466,2 | | | | | | | |
| | 10 | 145 | 13,00 | 459,2 | | | | | | | |
| EAGLE 110 | 7 | 100 | 19,50 | 688,7 | 110/150 | DN80 | 3085 | 1825 | 2450/2200 | 3750/4000 | 81 |
| | 8,5 | 125 | 17,70 | 625,2 | | | | | | | |
| | 10 | 145 | 15,50 | 547,5 | | | | | | | |
| EAGLE 132 | 7 | 100 | 22,30 | 787,6 | 132/180 | DN80 | 3085 | 1825 | 2450/2200 | 3900/4150 | 83 |
| | 8,5 | 125 | 20,90 | 738,2 | | | | | | | |
| | 10 | 145 | 19,40 | 685,2 | | | | | | | |
| EAGLE 160 | 7 | 100 | 25,40 | 897,1 | 160/220 | DN80 | 3085 | 1825 | 2450/2200 | 4150/4400 | 84 |
| | 8,5 | 125 | 25,40 | 897,1 | | | | | | | |
| | 10 | 145 | 24,00 | 847,7 | | | | | | | |
| EAGLE 185 | 7 | 100 | 28,00 | 989,0 | 185/250 | DN80 | 3085 | 1825 | 2450/2200 | 4150/4400 | 84 |
| | 8,5 | 125 | 28,00 | 989,0 | | | | | | | |
| | 10 | 145 | 28,00 | 989,0 | | | | | | | |
| EAGLE 200 | 7 | 100 | 36,50 | 1289,2 | 200/270 | DN100 | 3685/3465 | 2140 | 2715/ 2450 | 5900/6100 | 85 |
| | 8,5 | 125 | 34,00 | 1200,9 | | | | | | | |
| | 10 | 145 | 31,60 | 1116,1 | | | | | | | |
| EAGLE 250 | 7 | 100 | 44,30 | 1564,7 | 250/340 | DN100 | 3685/3465 | 2140 | 2715/ 2450 | 6100/6350 | 86 |
| | 8,5 | 125 | 40,50 | 1430,5 | | | | | | | |
| | 10 | 145 | 36,40 | 1285,6 | | | | | | | |
| EAGLE 315 | 7 | 100 | 50,10 | 1769,5 | 315/430 | DN100 | 3685/3465 | 2140 | 2715/ 2450 | 6300/6500 | 87 |
| | 8,5 | 125 | 48,70 | 1720,1 | | | | | | | |
| | 10 | 145 | 44,20 | 1561,1 | | | | | | | |

- Refers to free air delivery measured according to ISO 1217:2009, Annex C standard. HERTZ reserves its rights to make changes in its products and specifications without prior notice.

TECHNICAL DATA

| Model | Pressure | | Capacity | | | | Motor Power | Connection Size | Dimensions (mm) Air Cooled / Water cooled | | | Weight | Noise |
|---------------|----------|-----|---------------------|------|-------|--------|-------------|-----------------|--|-------|-----------|-----------|-------|
| | | | m ³ /min | | cfm | | | | Length | Width | Height | | |
| | bar | psi | min | max | min | max | kW/HP | | | | | kg | dB(A) |
| EAGLE 55 VSD | 7 | 100 | 3,4 | 9,1 | 120,1 | 321,4 | 55/75 | G 2" | 2450 | 1600 | 2160 | 2675 | 77 |
| | 8,5 | 125 | 3,4 | 8,3 | 120,1 | 293,2 | | | | | | | |
| | 10 | 145 | 3,4 | 7,0 | 120,1 | 247,2 | | | | | | | |
| EAGLE 75 VSD | 7 | 100 | 3,4 | 12,1 | 120,1 | 427,4 | 75/100 | G 2" | 2450 | 1600 | 2160 | 2935 | 77 |
| | 8,5 | 125 | 3,4 | 11,3 | 120,1 | 399,1 | | | | | | | |
| | 10 | 145 | 3,4 | 10,6 | 120,1 | 374,4 | | | | | | | |
| EAGLE 90 VSD | 7 | 100 | 3,4 | 14,5 | 120,1 | 512,1 | 90/125 | G 2" | 2450 | 1600 | 2160 | 3025 | 75 |
| | 8,5 | 125 | 3,4 | 13,6 | 120,1 | 480,4 | | | | | | | |
| | 10 | 145 | 3,4 | 13,2 | 120,1 | 466,2 | | | | | | | |
| EAGLE 110 VSD | 7 | 100 | 10,0 | 19,7 | 353,2 | 695,8 | 110/150 | DN80 | 3085 | 1825 | 2450/2200 | 4100/4350 | 82 |
| | 8,5 | 125 | 10,0 | 18,2 | 353,2 | 642,8 | | | | | | | |
| | 10 | 145 | 10,0 | 17,0 | 353,2 | 600,4 | | | | | | | |
| EAGLE 132 VSD | 7 | 100 | 10,40 | 22,2 | 367,3 | 784,1 | 132/180 | DN80 | 3085 | 1825 | 2450/2200 | 4200/4400 | 84 |
| | 8,5 | 125 | 10,30 | 21,0 | 363,8 | 741,7 | | | | | | | |
| | 10 | 145 | 10,30 | 19,6 | 363,8 | 692,3 | | | | | | | |
| EAGLE 160 VSD | 7 | 100 | 10,00 | 26,9 | 353,2 | 950,1 | 160/220 | DN80 | 3085 | 1825 | 2450/2200 | 4000/4200 | 85 |
| | 8,5 | 125 | 9,80 | 25,5 | 346,1 | 900,7 | | | | | | | |
| | 10 | 145 | 9,80 | 23,5 | 346,1 | 830,0 | | | | | | | |
| EAGLE 185 VSD | 7 | 100 | 10,30 | 29,5 | 363,8 | 1041,9 | 185/250 | DN80 | 3085 | 1825 | 2450/2200 | 4600/4850 | 85 |
| | 8,5 | 125 | 10,20 | 28,1 | 360,3 | 992,5 | | | | | | | |
| | 10 | 145 | 10,10 | 26,4 | 356,7 | 932,4 | | | | | | | |
| EAGLE 200 VSD | 7 | 100 | 18,20 | 35,0 | 642,8 | 1236,2 | 200/270 | DN100 | 3685/3465 | 2140 | 2715/2450 | 6300/6550 | 85 |
| | 8,5 | 125 | 18,00 | 31,4 | 635,8 | 1109,0 | | | | | | | |
| | 10 | 145 | 17,90 | 28,5 | 632,2 | 1006,6 | | | | | | | |
| EAGLE 250 VSD | 7 | 100 | 17,30 | 44,5 | 611,0 | 1571,7 | 250/340 | DN100 | 3685/3465 | 2140 | 2715/2450 | 6650/6700 | 87 |
| | 8,5 | 125 | 17,20 | 41,2 | 607,5 | 1455,2 | | | | | | | |
| | 10 | 145 | 17,00 | 37,7 | 600,4 | 1331,6 | | | | | | | |
| EAGLE 315 VSD | 7 | 100 | 17,50 | 48,8 | 618,1 | 1723,6 | 315/430 | DN100 | 3685/3465 | 2140 | 2715/2450 | 6650/6900 | 88 |
| | 8,5 | 125 | 17,40 | 46,6 | 614,6 | 1645,9 | | | | | | | |
| | 10 | 145 | 17,30 | 44,9 | 611,0 | 1585,9 | | | | | | | |

- Refers to free air delivery measured according to ISO 1217:2009, Annex E standard. HERTZ reserves its rights to make changes in its products and specifications without prior notice.



HERTZ KOMPRESSOREN GLOBAL
export@hertz-kompressoren.com
www.hertz-kompressoren.com

HERTZ KOMPRESSOREN GmbH
Kronacherstr. 60, 96052 Bamberg
T: +49 951 96 43 1388 F: +49 951 96 43 1350
info@hertz-kompressoren.de

HERTZ KOMPRESSOREN USA Inc.
3320 Service St. Charlotte, NC 28206 USA
T: +1-704-579-5900 F : +1-704-579-5997
info@hertz-kompressoren.us

SCHULZ

Oil-less Scroll Compressor
Compressor Scroll Sin Aceite



www.schulz.com.br

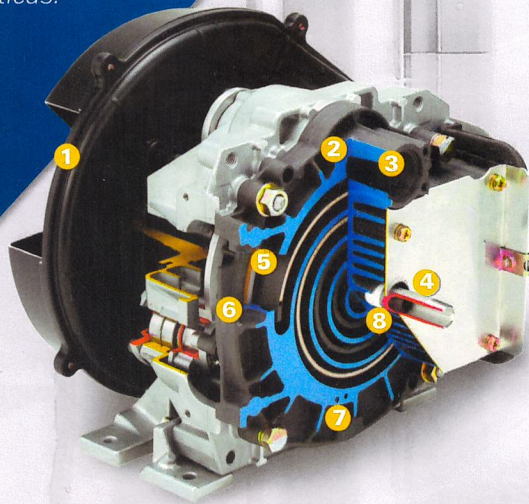
OIL-LESS SCROLL COMPRESSOR

COMPRESOR SCROLL SIN ACEITE

FIXED SPEED / VELOCIDAD FIJA

The compressors with Schulz Scroll compression technology have as main characteristic the generation of oil-less compressed air for critical applications.

Los compresores con tecnología de compresión Scroll de Schulz poseen como principal característica la generación de aire comprimido sin aceite para aplicaciones críticas.



1 SCROLL UNIT

UNIDAD SCROLL

Air compression mechanism in which no oil or water is discharged together with compressed air or drain.

Mecanismo de compresión de aire en que ningún aceite o agua se descarga junto al aire comprimido o dreno.

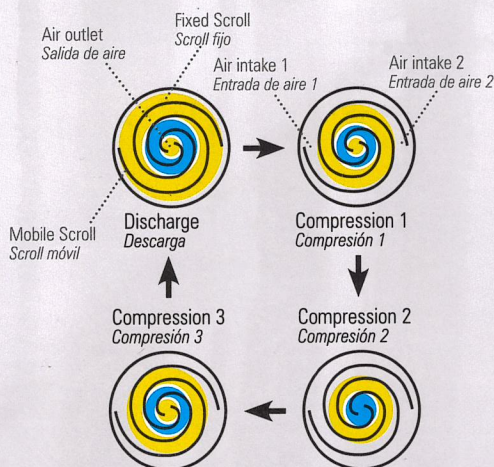
- 1 Fan
Ventilador
- 2 Suction Chamber
Cámara de succión
- 3 Air intake
Entrada del aire
- 4 Discharge of compressed air
Descarga del aire comprimido
- 5 Fixed Scroll
Scroll fijo
- 6 Mobile Scroll
Scroll móvil
- 7 Temperature sensor to protect the compressor unit
Sensor de temperatura para protección de la unidad compresora
- 8 Compression chamber
Cámara de compresión

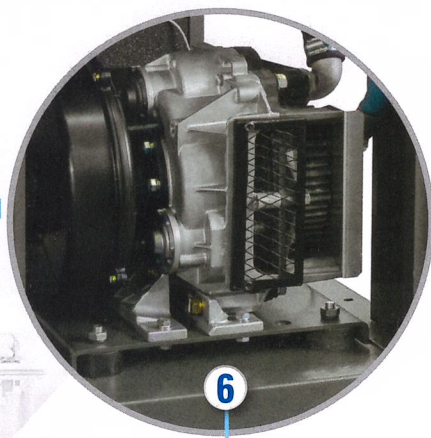
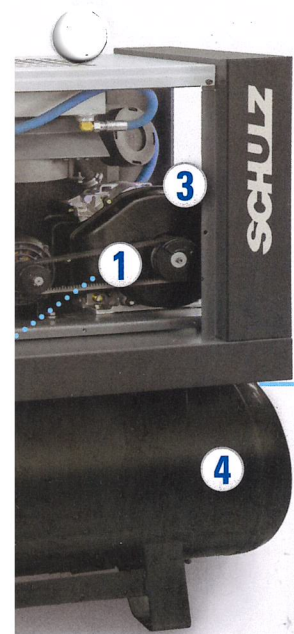


QUALITY / CALIDAD

Scroll models work with oil-free compressed air and incorporate an air dryer and pressure vessel. In addition, they allow the generation, treatment and storage of high-quality compressed air free of condensate with less space and less costs with installations. The main industries benefited are hospital, pharmaceutical, cosmetic, dental, food, beverage, semiconductor and others.

Los modelos Scroll trabajan con aire comprimido sin aceite e integran secador de aire y reservatorio. Estos equipos permiten generar, tratar y almacenar aire comprimido de alta calidad libre de condensado con menor espacio ocupado y menos gastos de instalaciones. Los principales segmentos atendidos son hospitalario, farmacéutico, cosmético, odontológico, alimentos, bebidas, semiconductores y otros.





**ZERO CLASS CERTIFICATION
CERTIFICACIÓN CLASE CERO**

ISO 8573-1 establishes quality classes for compressed air. Zero Class indicates that the oil flow, steam or mixture of oil are completely absent. As the oil steam, in particular, cannot be absorbed by conventional filters, it is important that factories requiring clean air to use Schulz compressors Zero Class.

ISO 8573-1 define clases de calidad para el aire comprimido. Clase Cero indica que el flujo de aceite, vapor o mezcla de ó aceite son completamente ausentes. Como el vapor de aceite, en particular, no puede ser absorbido por filtros convencionales, se torna importante que las fábricas que necesitan aire limpio utilicen compresores Schulz Clase Cero.

RADIATOR / DIADOR

Oversized radiator that increases the machine performance

Radiador superdimensionado que aumenta el rendimiento de la máquina

SAFETY / SEGURIDAD

Cabin prepared to provide user protection in accordance with NR-12

Cabina preparada para ofrecer protección al usuario de acuerdo con la NR-12

**PRESSURE VESSEL /
RESERVATORIO**

Constructed according to NR-13

Construidos de acuerdo con la NR-13

**ELECTRIC CONTROL PANELO /
TABLERO ELÉCTRICO**

General disconnect switch for total panel shutdown according to Standard NR-10 and NR-12

Start key with safety relay in 24 V according to Standard NR-12

*Llave seccionadora general para desconexión total del tablero conforme Norma NR-10 y NR-12
Llave de partida con relé de seguridad en 24 V conforme Norma NR-12*

TECHNICAL DATA FREE OF SCROLL OIL / DATOS TÉCNICOS SIN ACEITE SCROLL

| MODEL MODELO | MOTOR POWER POTENCIA DEL MOTOR | WORK PRESSURE PRESIÓN DE TRABAJO | FLOW RATE CAUDAL | OUTLET CONNECTION CONEXIÓN DE SALIDA | EXTERNAL DIMENSIONS (WXHXD) DIMENSIONES EXTERNAS (LXAXA) | WEIGHT PESO | VOLUME OF PRESSURE VESSEL VOLUMEN DEL RESERVATORIO |
|-----------------|---|---|---------------------|---|---|----------------|--|
| | hp | bar | CFM / pcm | in / pulg | mm | Gallons / kg | liters / litros |
| SCR 4005 TS | 5 | 6-8 | 14,5 | R 1/2 | 1360 x 1250 x 475 | 278 | 200 |
| SCR 4005 R | 5 | 6-8 | 14,5 | R 1/2 | 1360 x 1250 x 475 | 248 | 200 |
| SCR 4005 ADS | 5 | 6-8 | 14,5 | R 1/2 | 1100 x 710 x 475 | 214 | - |
| SCR 4005 AD | 5 | 6-8 | 14,5 | R 1/2 | 1100 x 710 x 475 | 194 | - |

www.schulzamerica.com

January 2021
Enero 2021

and design changes without advance notice, preserving the product's quality.
Las imágenes presentadas son sólo ilustrativas. Schulz se reserva el derecho de introducir cambios de diseño y de diseño sin aviso previo, preservando la calidad del producto.
Las fotos presentadas son sólo ilustrativas. Schulz se reserva el derecho de introducir cambios de diseño y de diseño sin aviso previo, preservando la calidad del producto.



SCHULZ
OF AMERICA, INC.



SCHULZ OF AMERICA, INC.

3500, Lake City Industrial Court | Acworth | GA 30101
Phone # (770) 529.4731 | Fax # (770) 529.4733
orders@schulzamerica.com | www.schulzamerica.com